

**FROCA**

**NATURAL**

**FROCA**



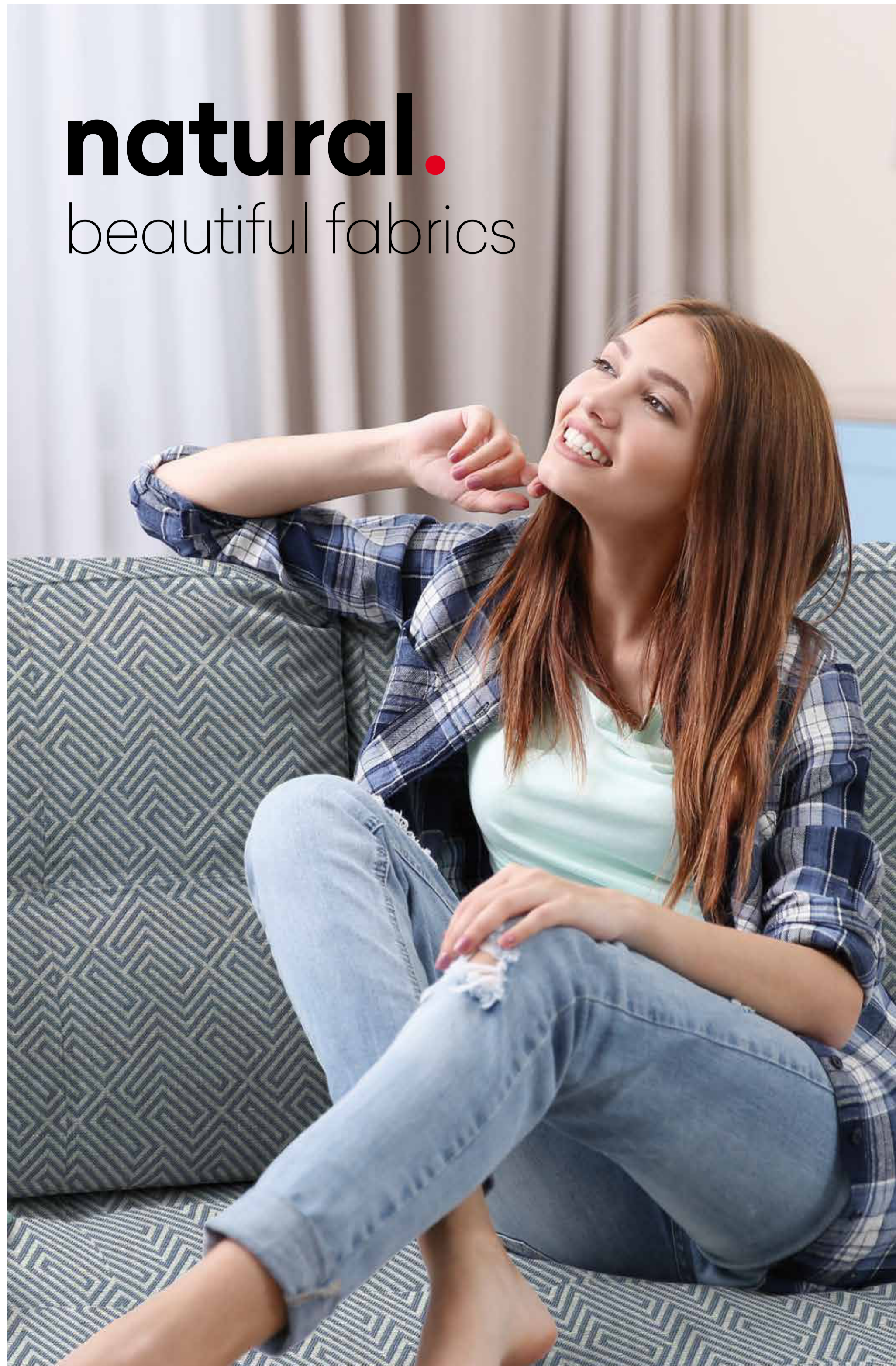


**FROCA**

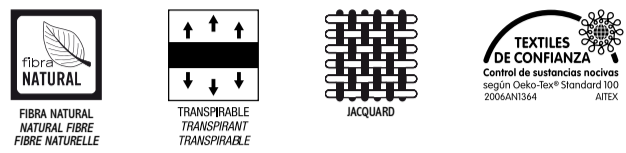
[www.froca.com](http://www.froca.com)



**natural.**  
beautiful fabrics

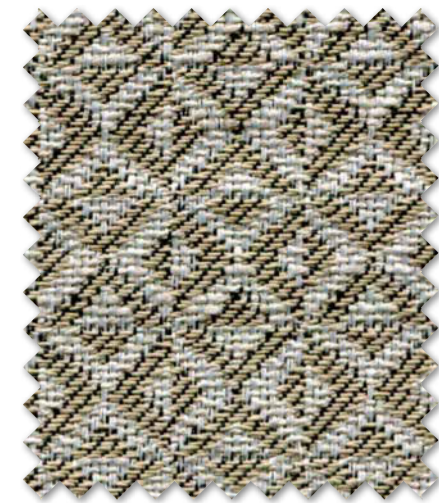




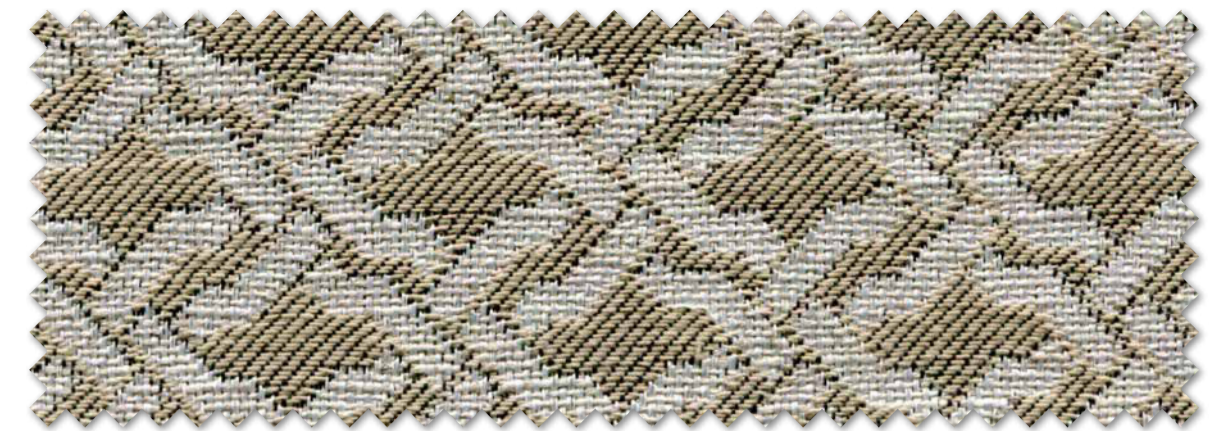


**FROCA**

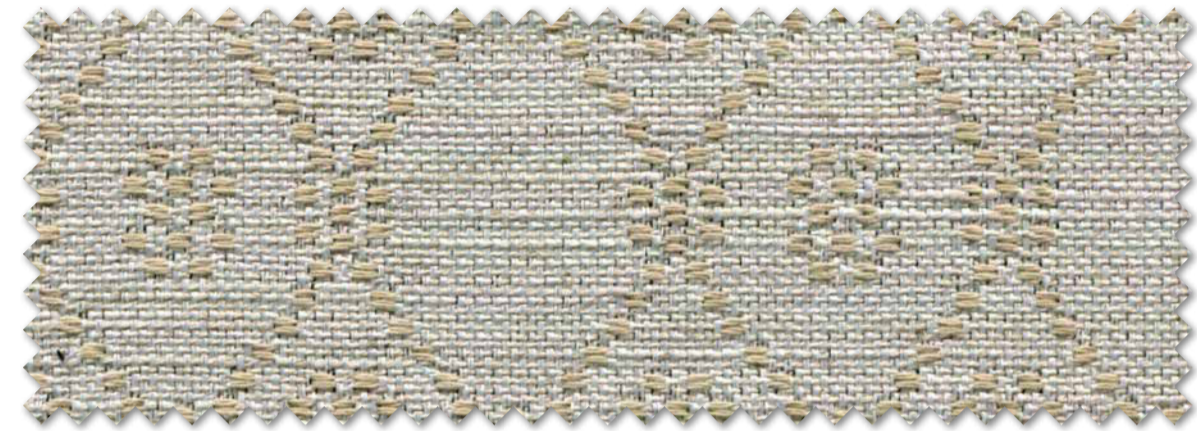
www.froca.com



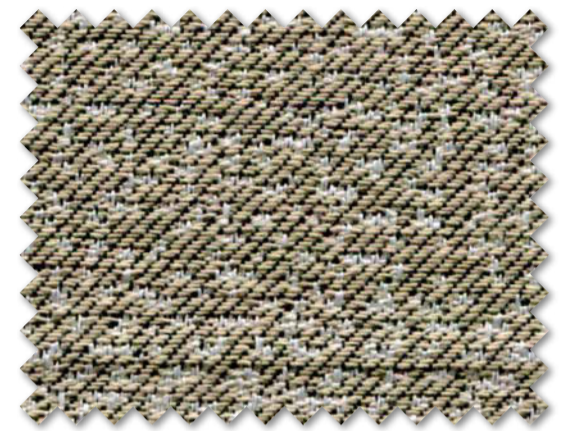
MONTINI 1



BRESCIA 1



SAVONA 1



BARI 1



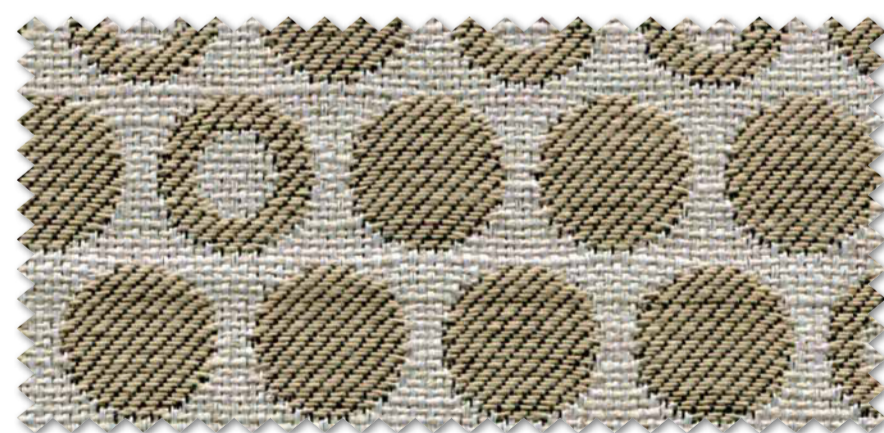
PISA 2



NOVARA 1



INDIANA 7



COMO 1



BADIA 1



PIANORD 1



BRUNEI 9



BRUNEI 10

**FROCA**

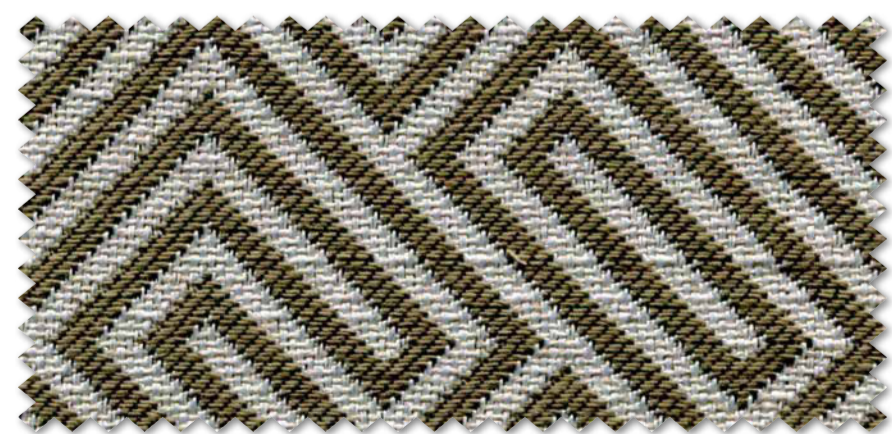
www.froca.com







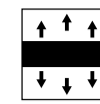
PISA 1



NOVARA 2



FIBRA NATURAL  
NATURAL FIBRE  
FIBRE NATURELLE



TRANSPARABLE  
TRANSPARENT  
TRANSPARENT



JACQUARD



TEXTILES  
DE CONFIANZA  
Control de asistencia recibes según Oeko-Tex® Standard 100 2004/1134



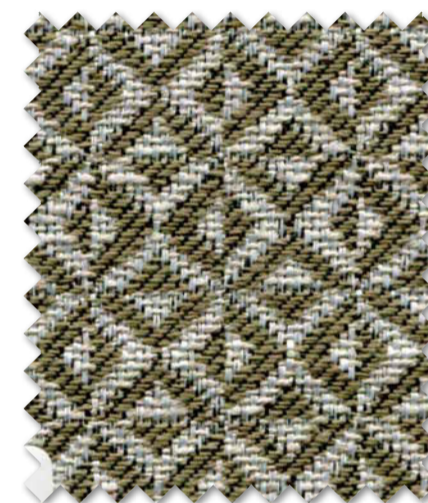
www.froca.com



COMO 2



PIANORD 2



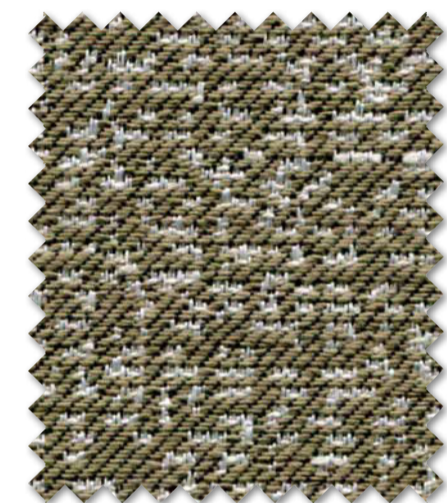
MONTINI 2



BADIA 2



BRESCIA 2



BARI 2



BRUNEI 12



BRUNEI 13



SAVONA 2



INDIANA 27



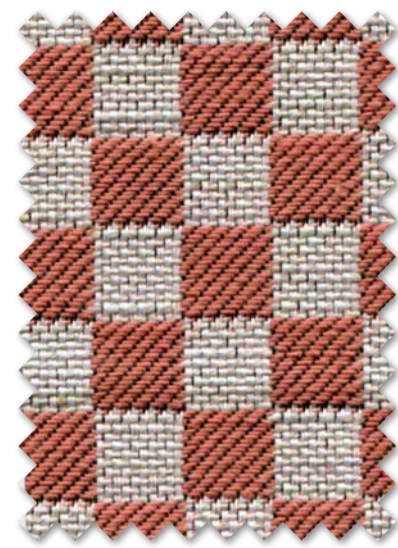
www.froca.com







**FROCA**  
www.froca.com



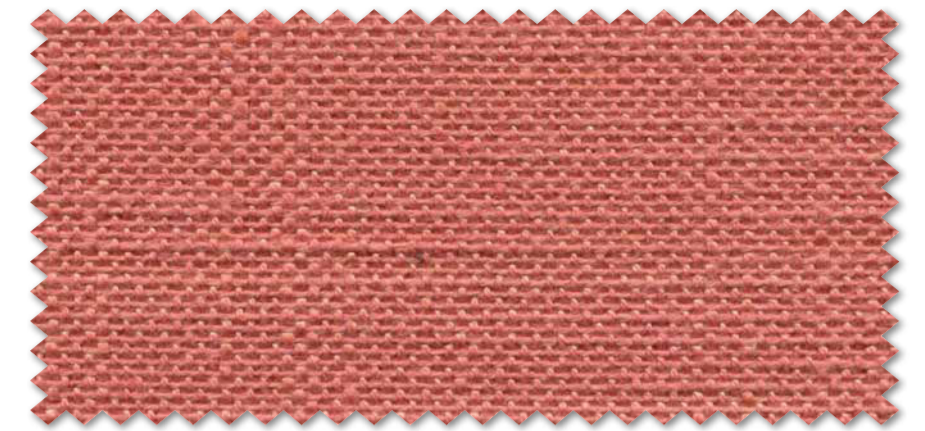
PIANORD 3



BRUNEI 30



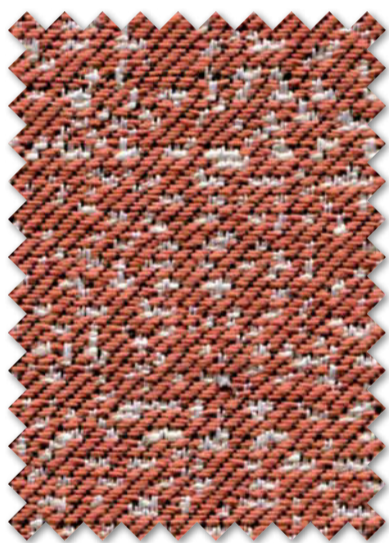
PISA 2



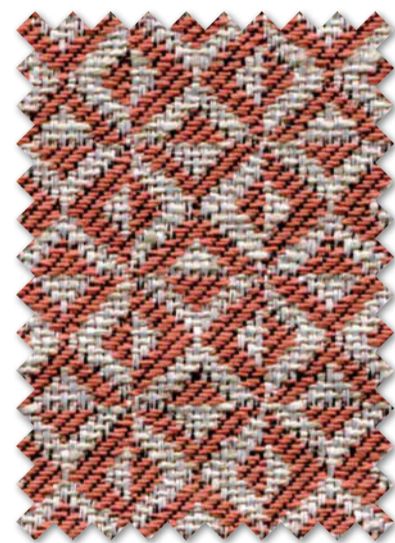
INDIANA 28



COMO 3



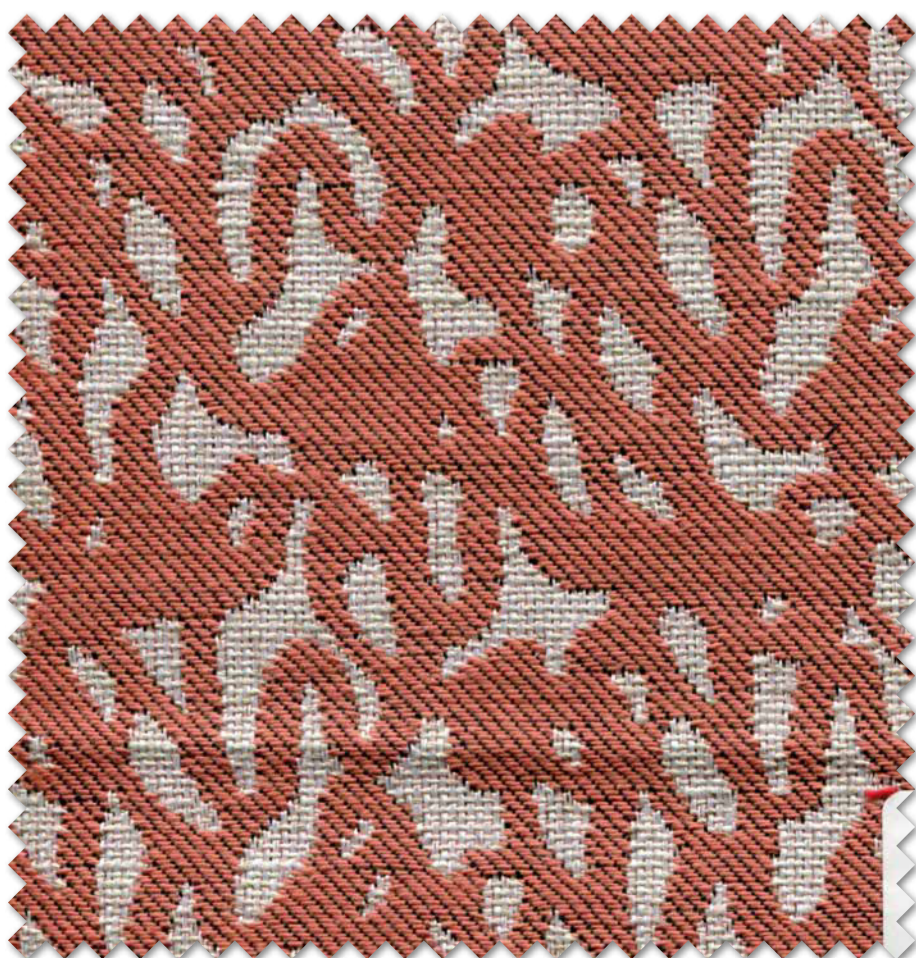
BARI 3



MONTINI 3



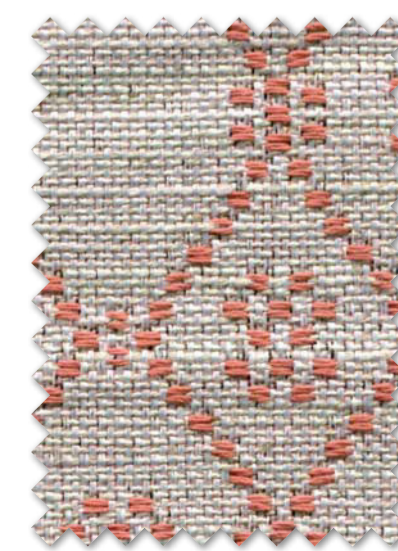
BRUNEI 31



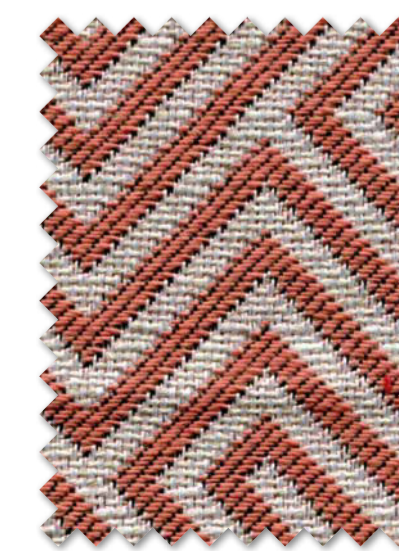
BADIA 3



BRESCIA 3



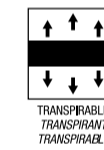
SAVONA 3



NOVARA 3



FIBRA NATURAL  
NATURAL FIBRE  
FIBRE NATURELLE



TRANSPARABLE  
TRANSPARENT  
TRANSPARENT



JACQUARD



TEXTILES  
DE CONFIANZA  
Control de sustentabilidad  
según Oeko-Tex® Standard 100  
certificación

**FROCA**

www.froca.com







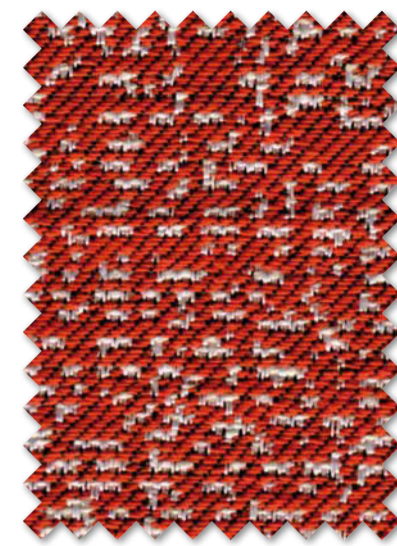
BADIA 4



BRESCIA 4



BRUNEI 19



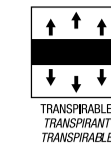
BARI 4



BRUNEI 16



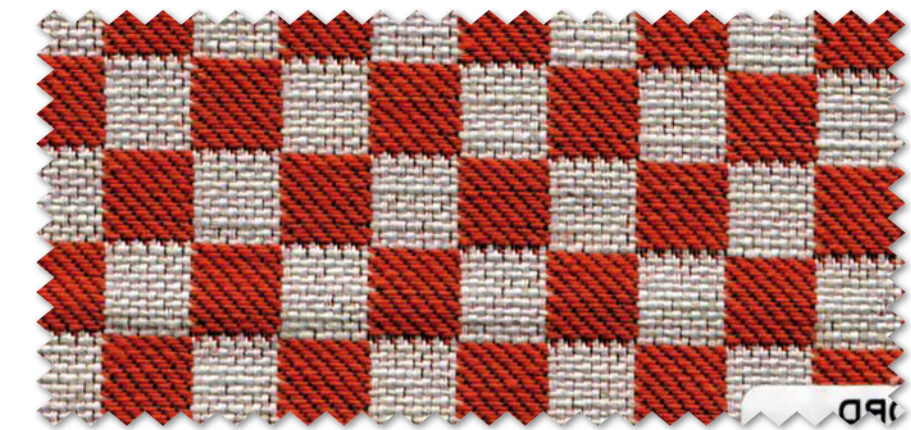
COMO 4



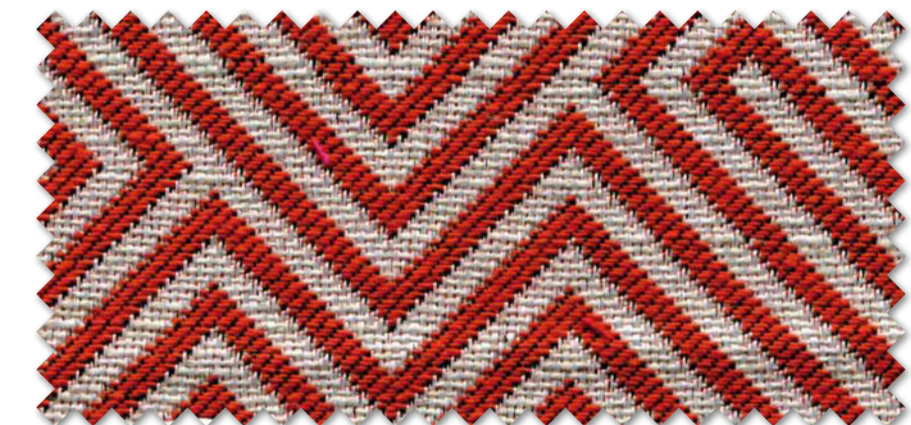
www.froca.com



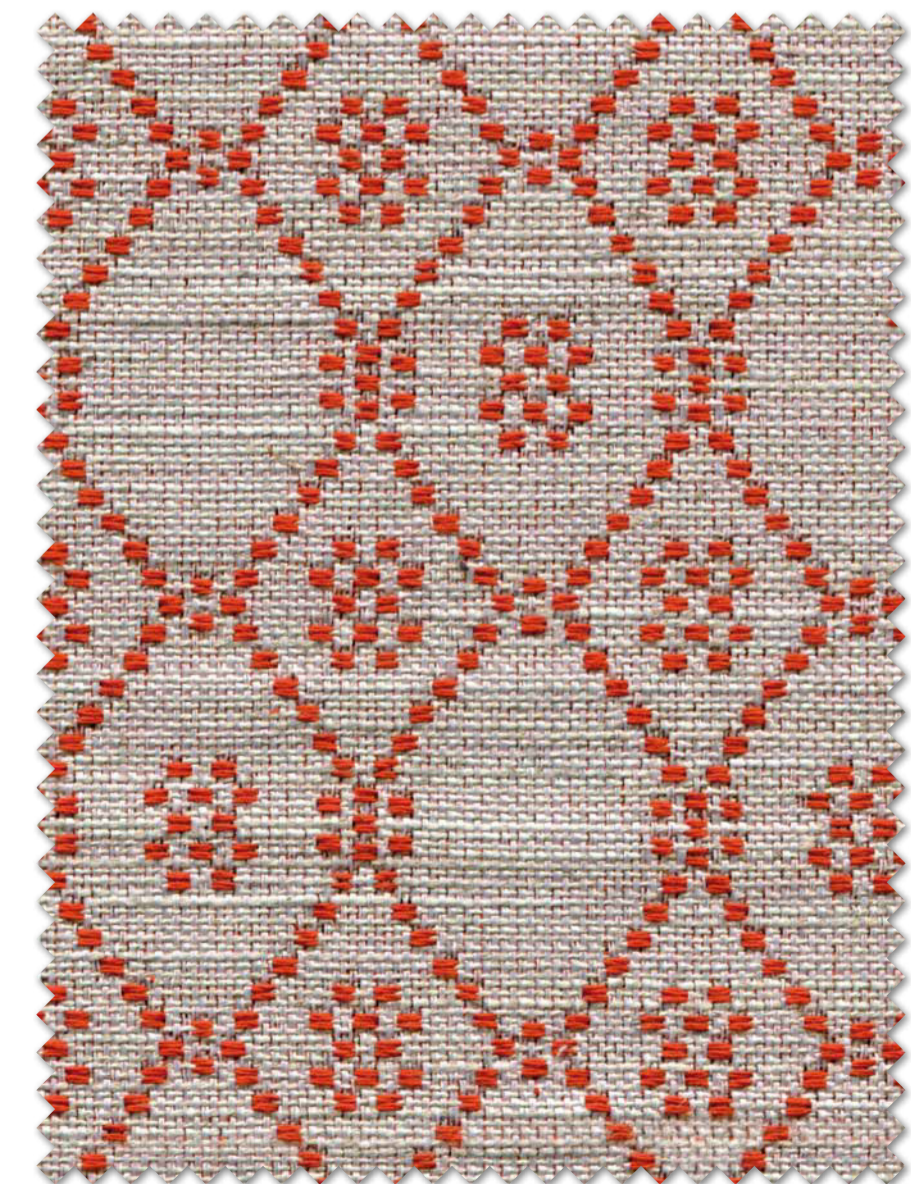
PISA 4



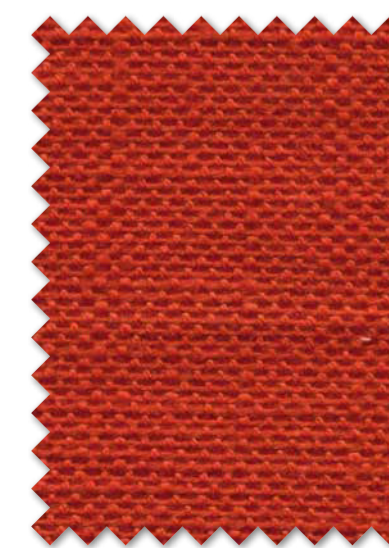
PIANORD 4



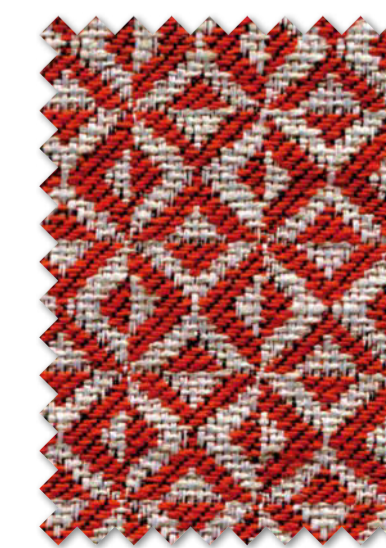
NOVARA 4



SAVONA 4



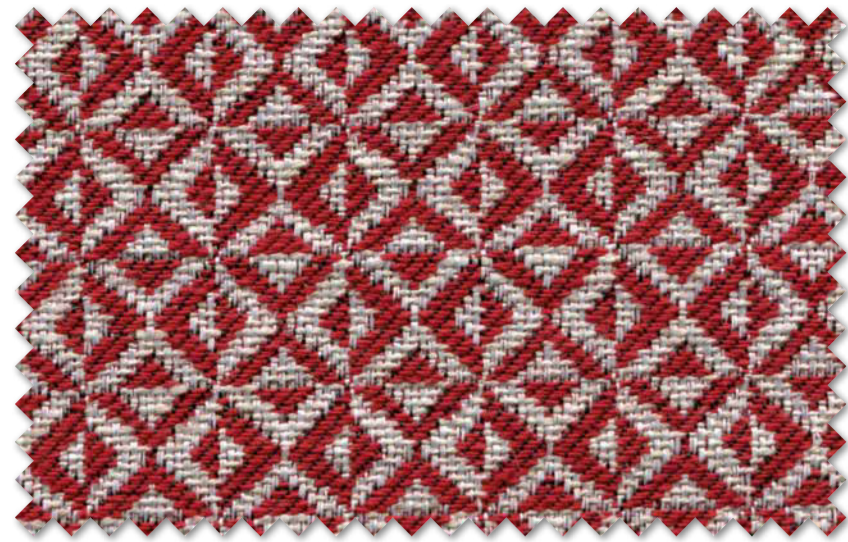
INDIANA 29



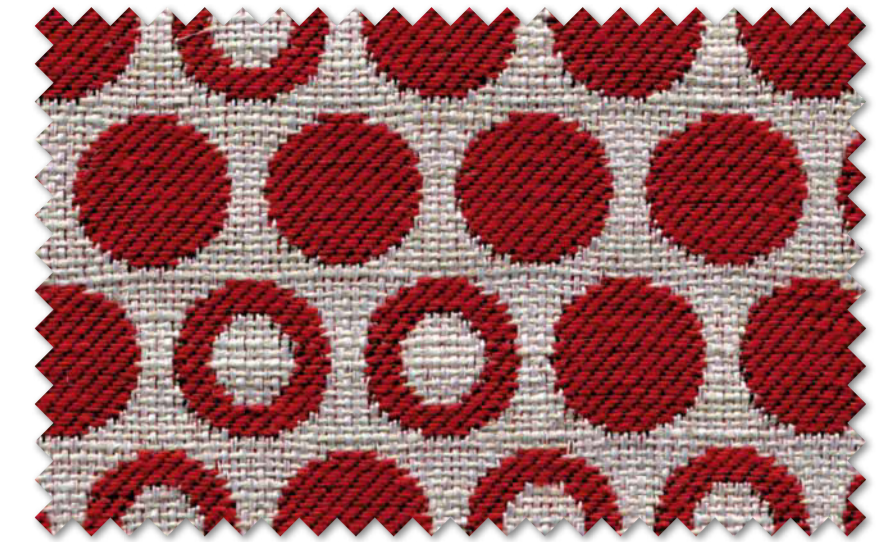
MONTINI 4







MONTINI 5



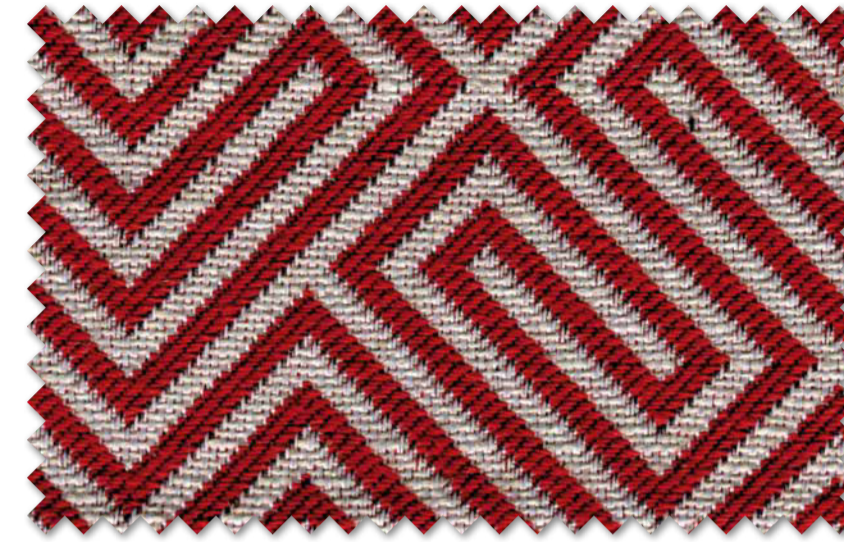
COMO 5



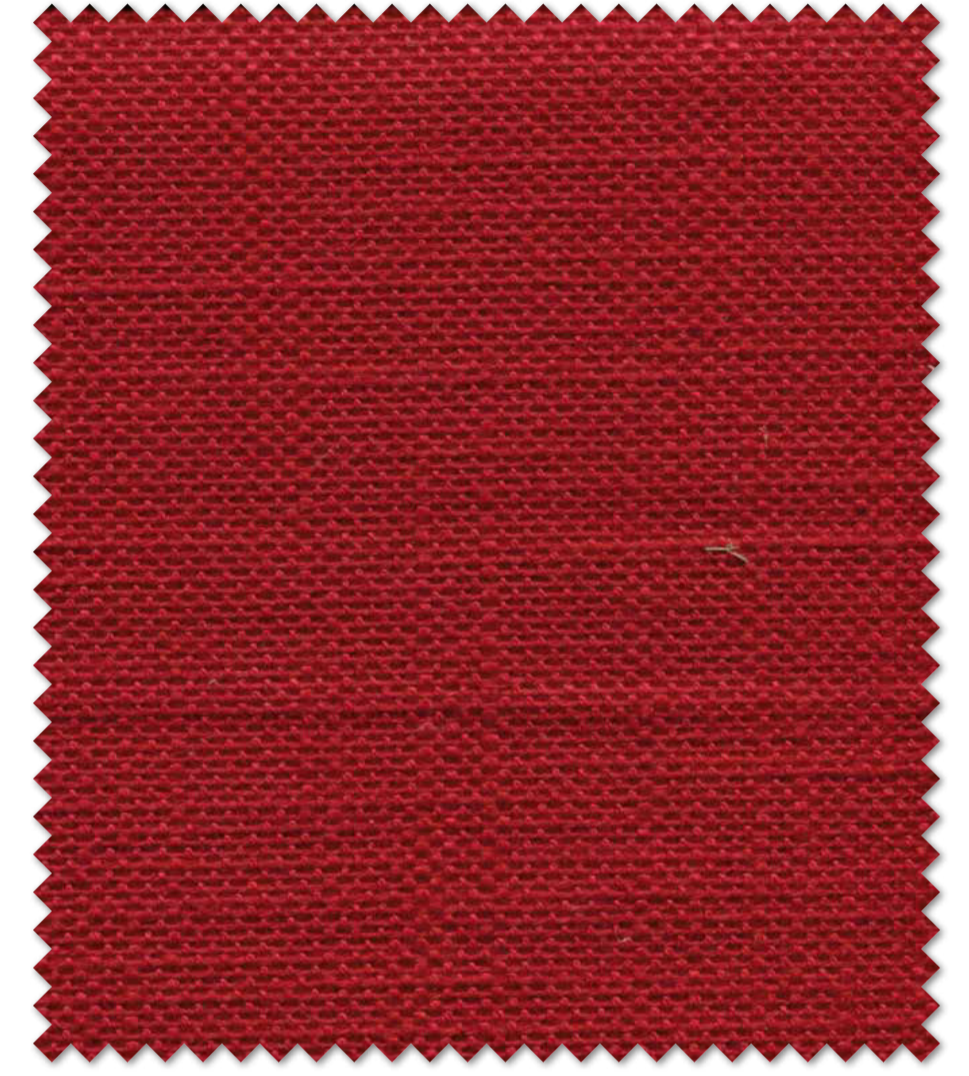
PISA 2



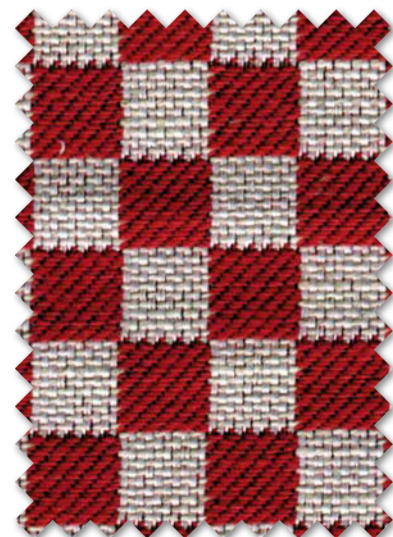
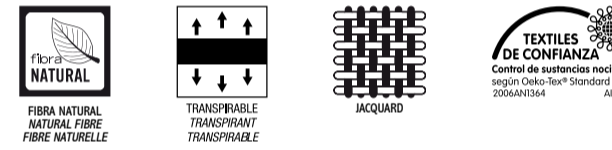
BADIA 5



NOVARA 5



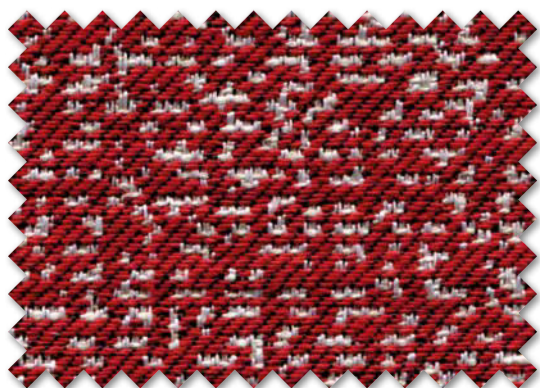
INDIANA 30



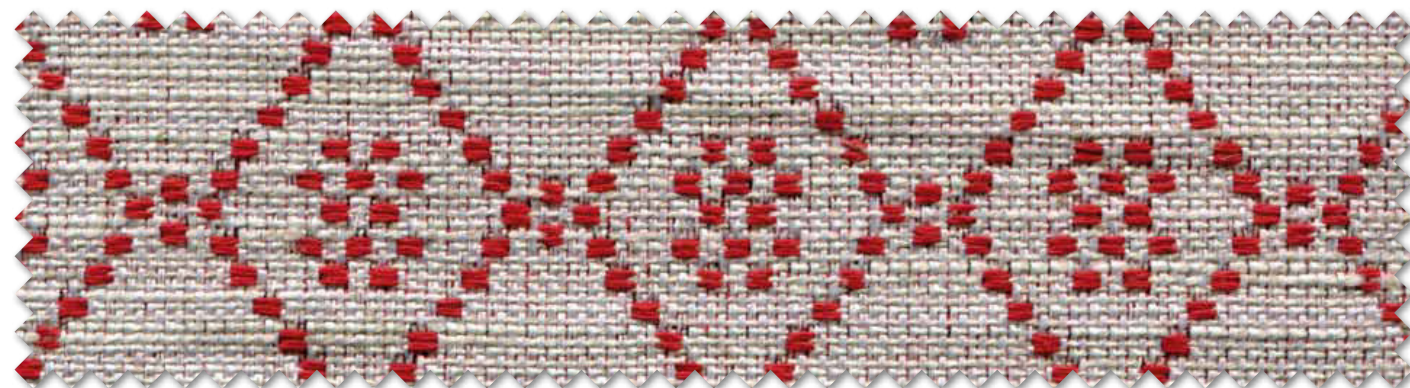
PIANORD 5



BRUNEI 23



BARI 5



SAVONA 5

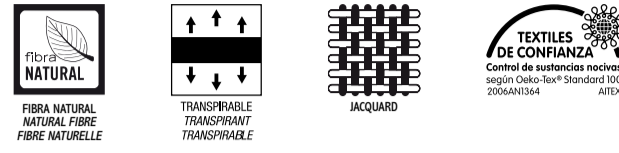


BRESCIA 5





INDIANA 19



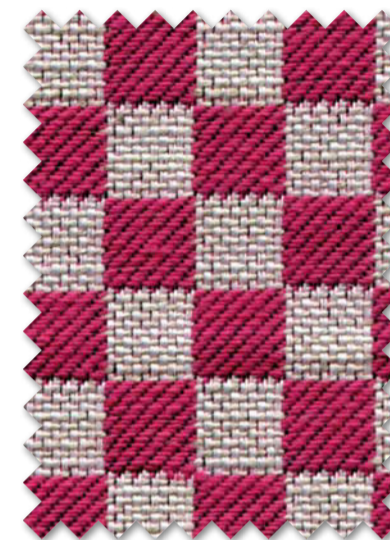
[www.froca.com](http://www.froca.com)



PISA 5



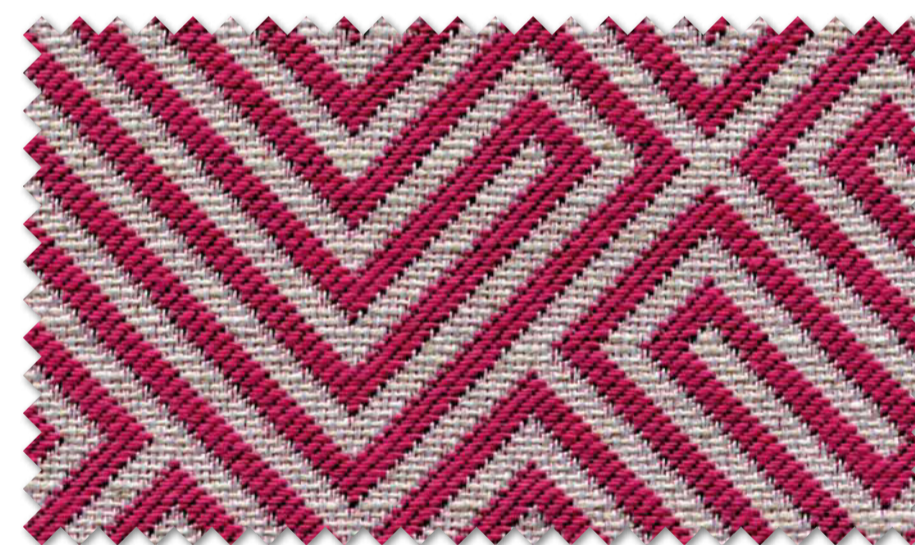
BADIA 6



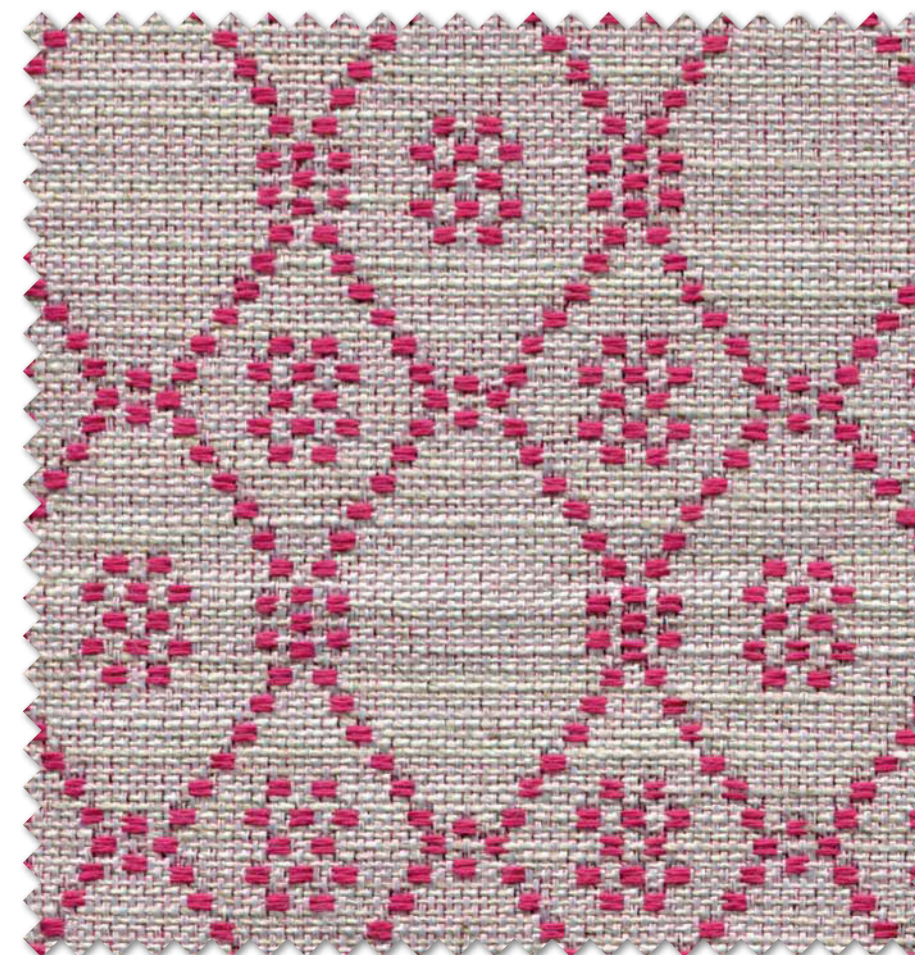
PIANORD 6



COMO 6



NOVARA 6



SAVONA 6



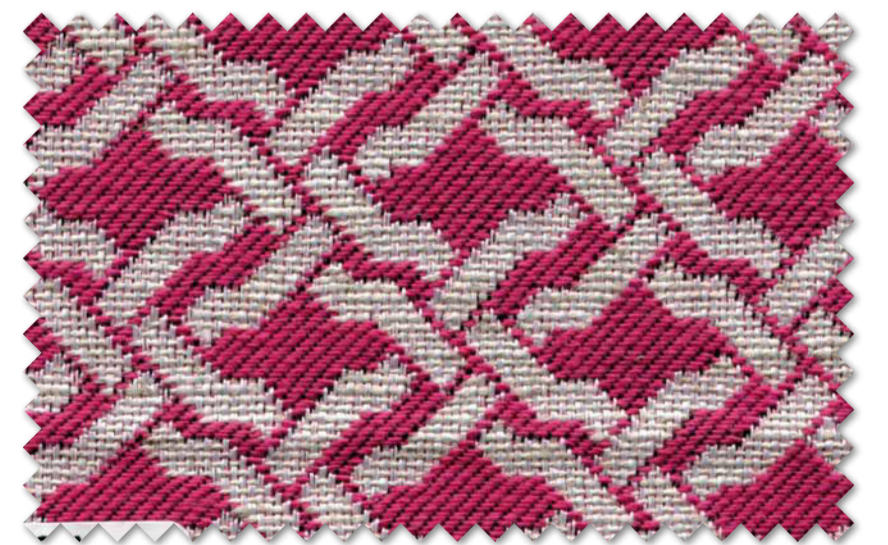
[www.froca.com](http://www.froca.com)



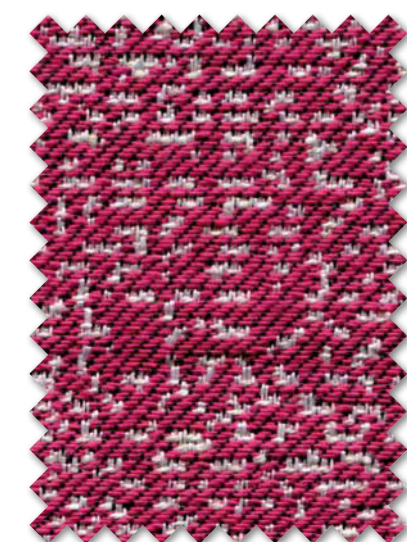
BRUNEI 26



BRUNEI 3



BRESCIA 6



BARI 6



MONTINI 6

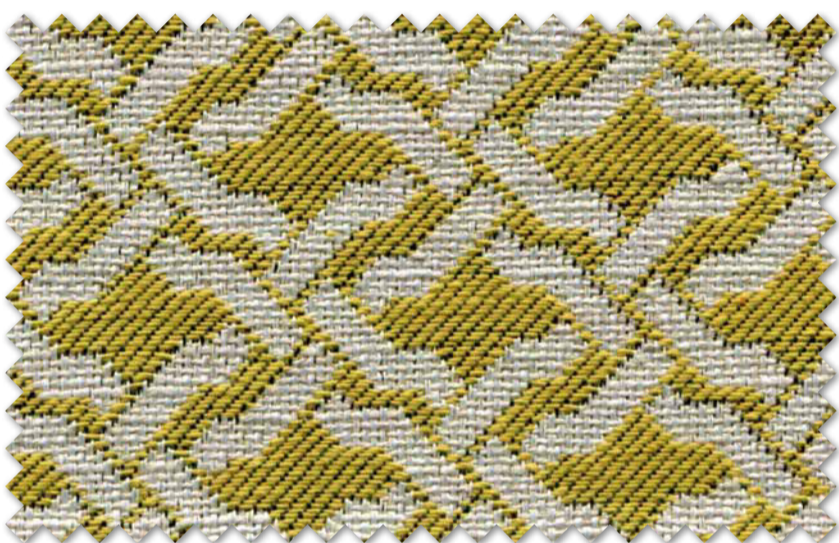




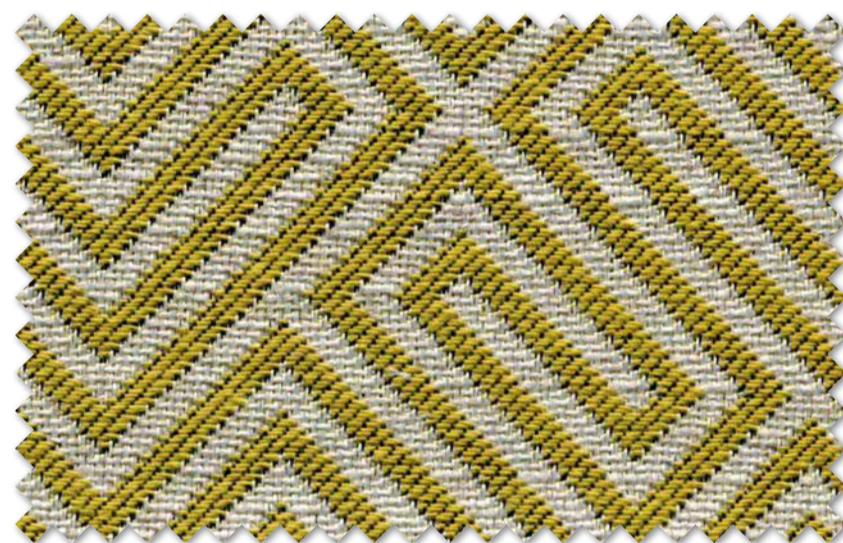
BRUNEI 41



BRUNEI 2



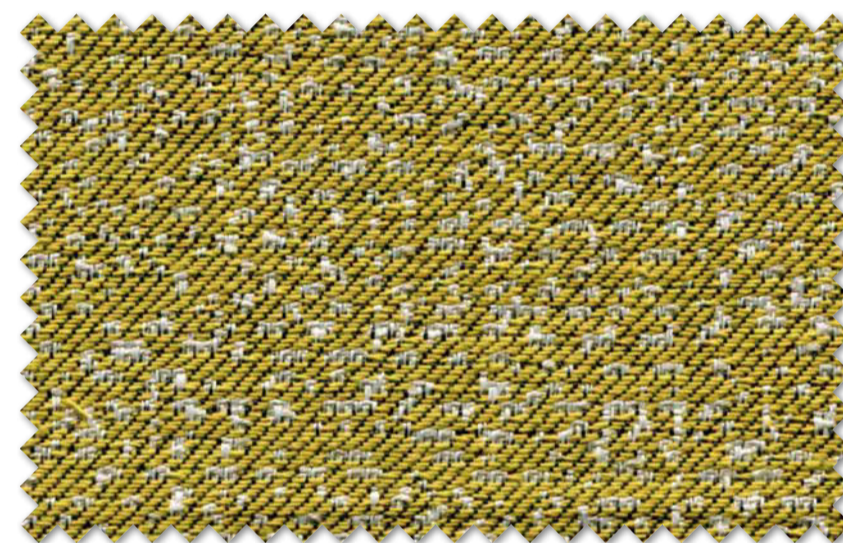
BRESCIA 7



NOVARA 7

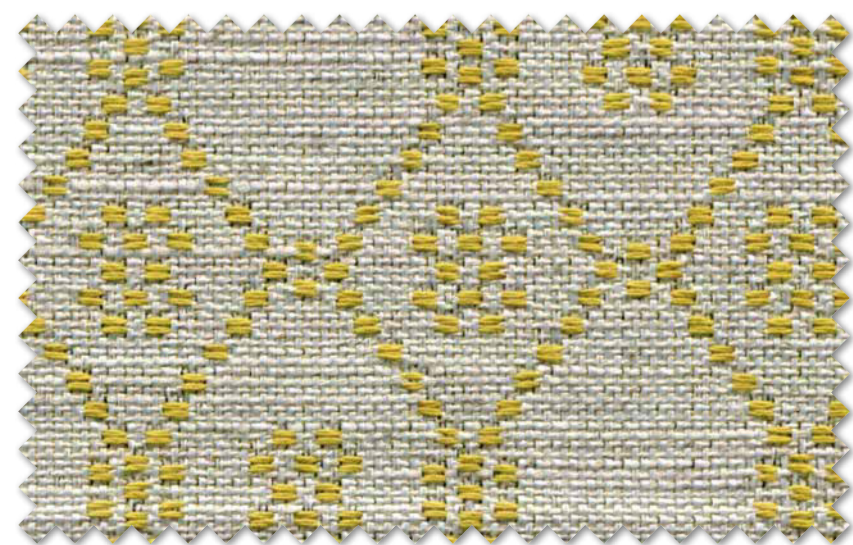


COMO 7



BARI 7

PISA 1



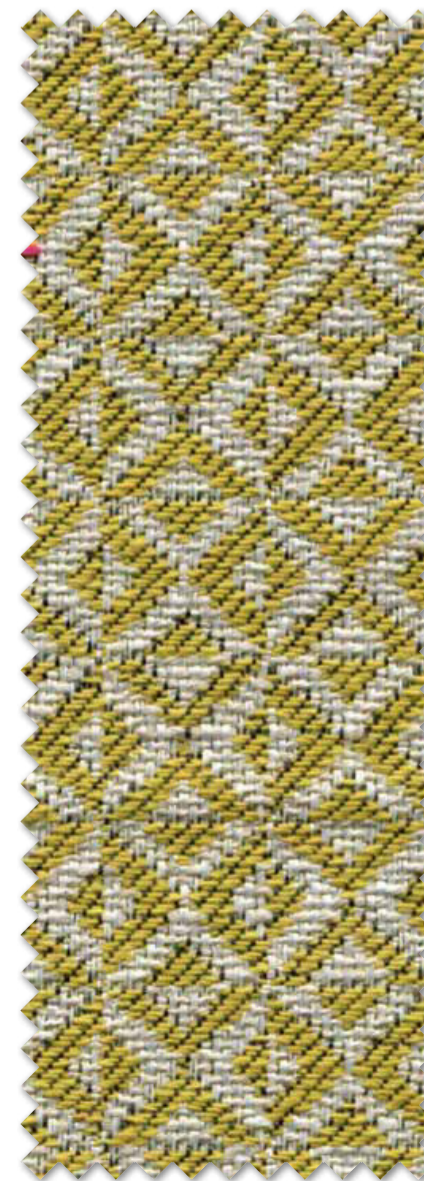
SAVONA 7



INDIANA 14



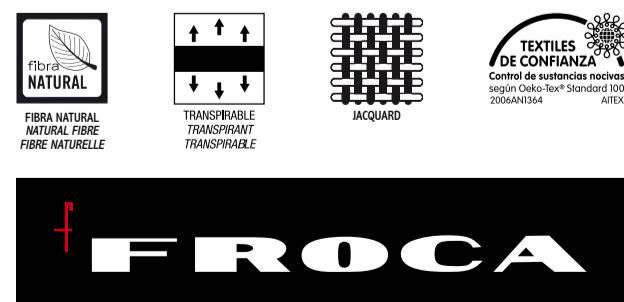
PIANORD 7



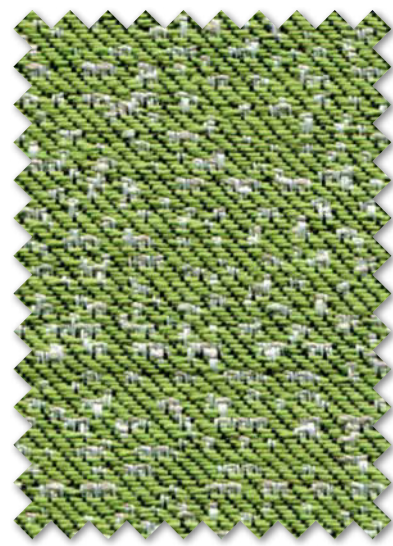
MONTINI 7



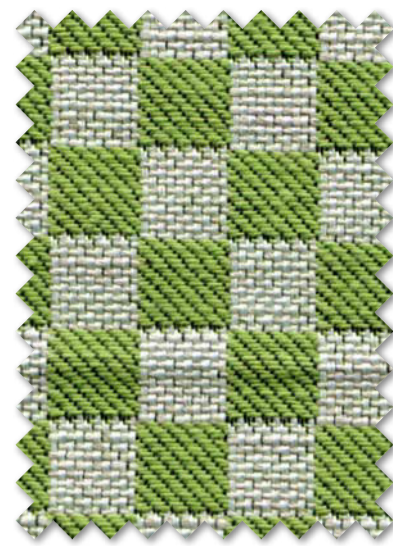
BADIA 7







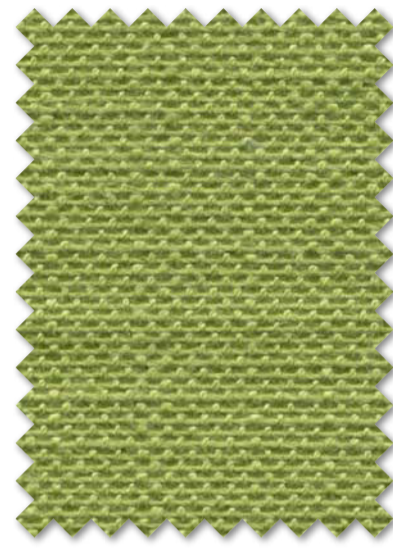
BARI 8



PIANORD 8



COMO 8



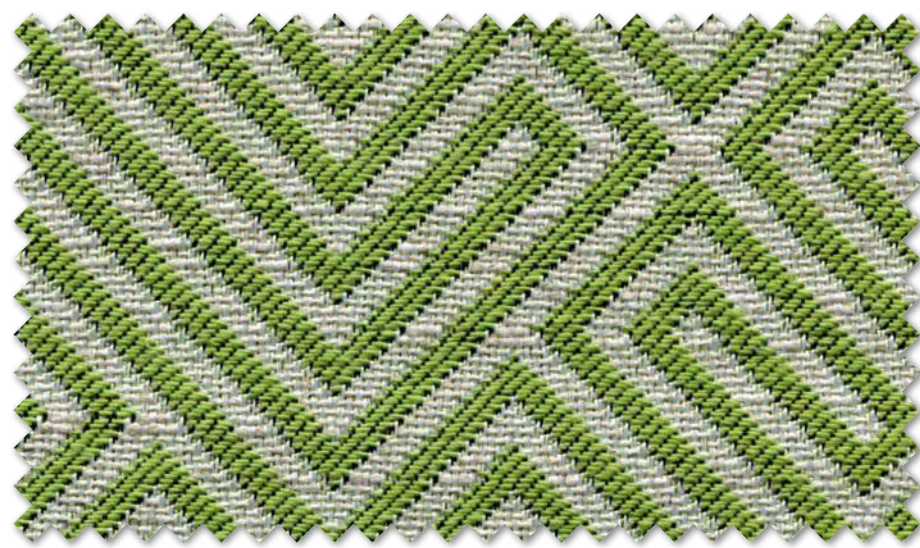
INDIANA 31



PISA 3



SAVONA 8



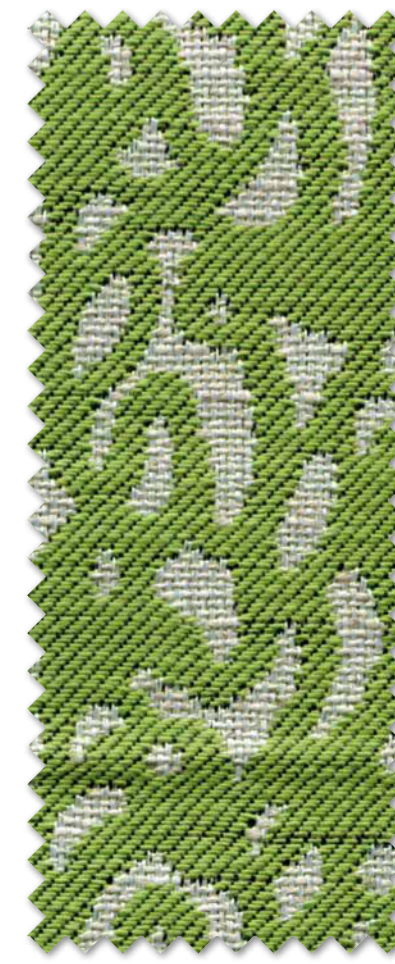
NOVARA 8



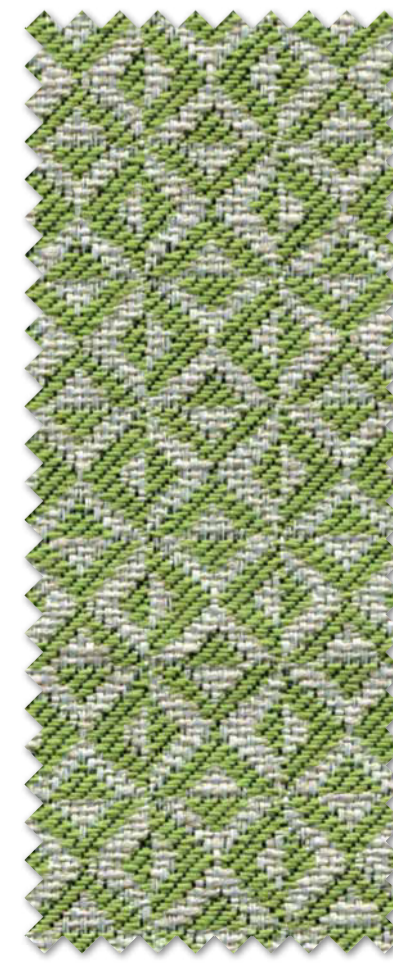
BRUNEI 43



BRUNEI 6



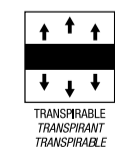
BADIA 8



MONTINI 8



BRESCIA 8



www.froca.com





BADIA 9



INDIANA 25



BRESCIA 9

**FROCA**

www.froca.com



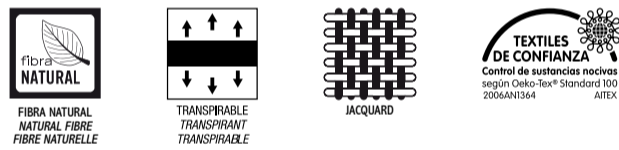
PISA 4



COMO 9

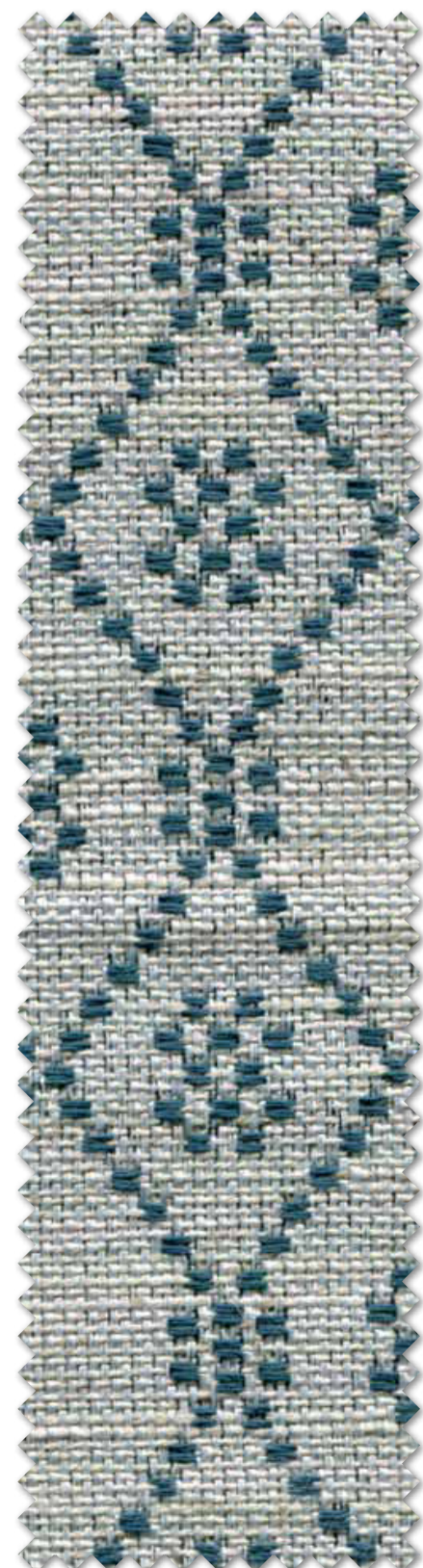


PIANORD 9



**FROCA**

www.froca.com



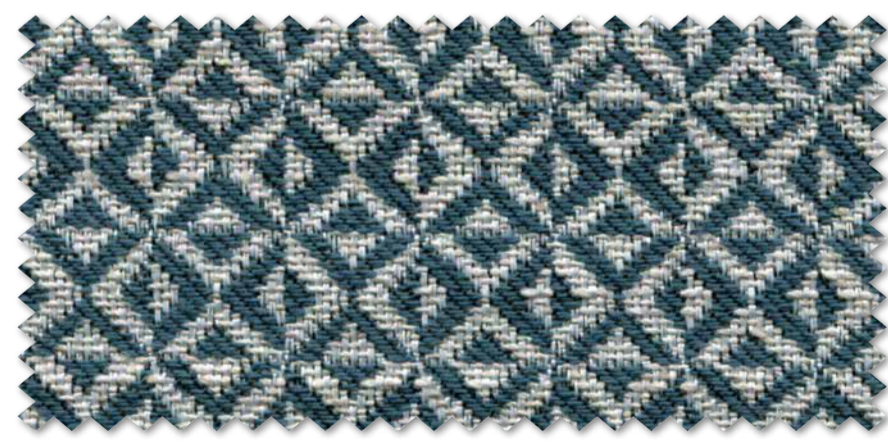
SAVONA 9



NOVARA 9



BARI 9



MONTINI 9



BRUNEI 40



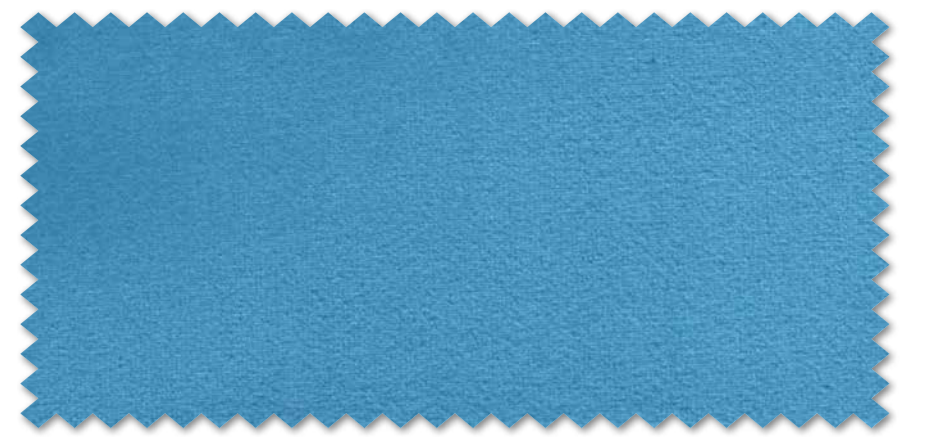
BRUNEI 41



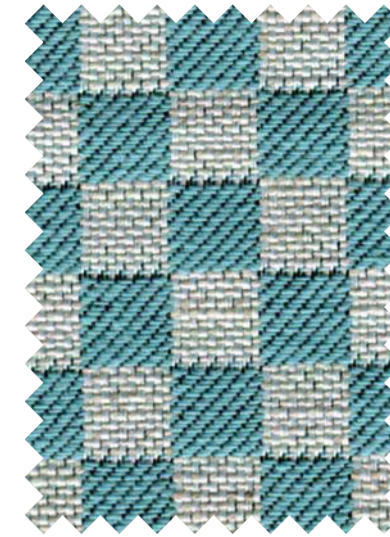




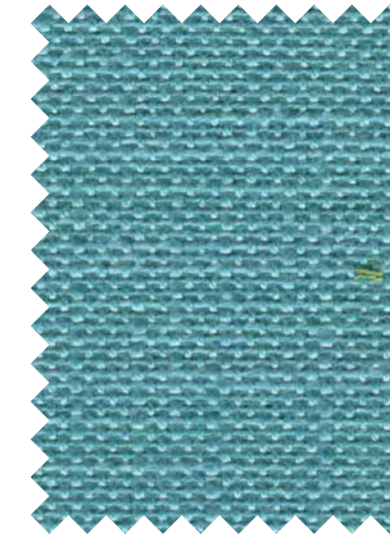
**FROCA**  
www.froca.com



BRUNEI 36



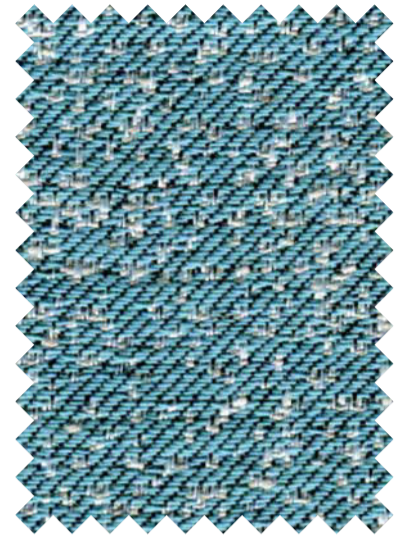
PIANORD 10



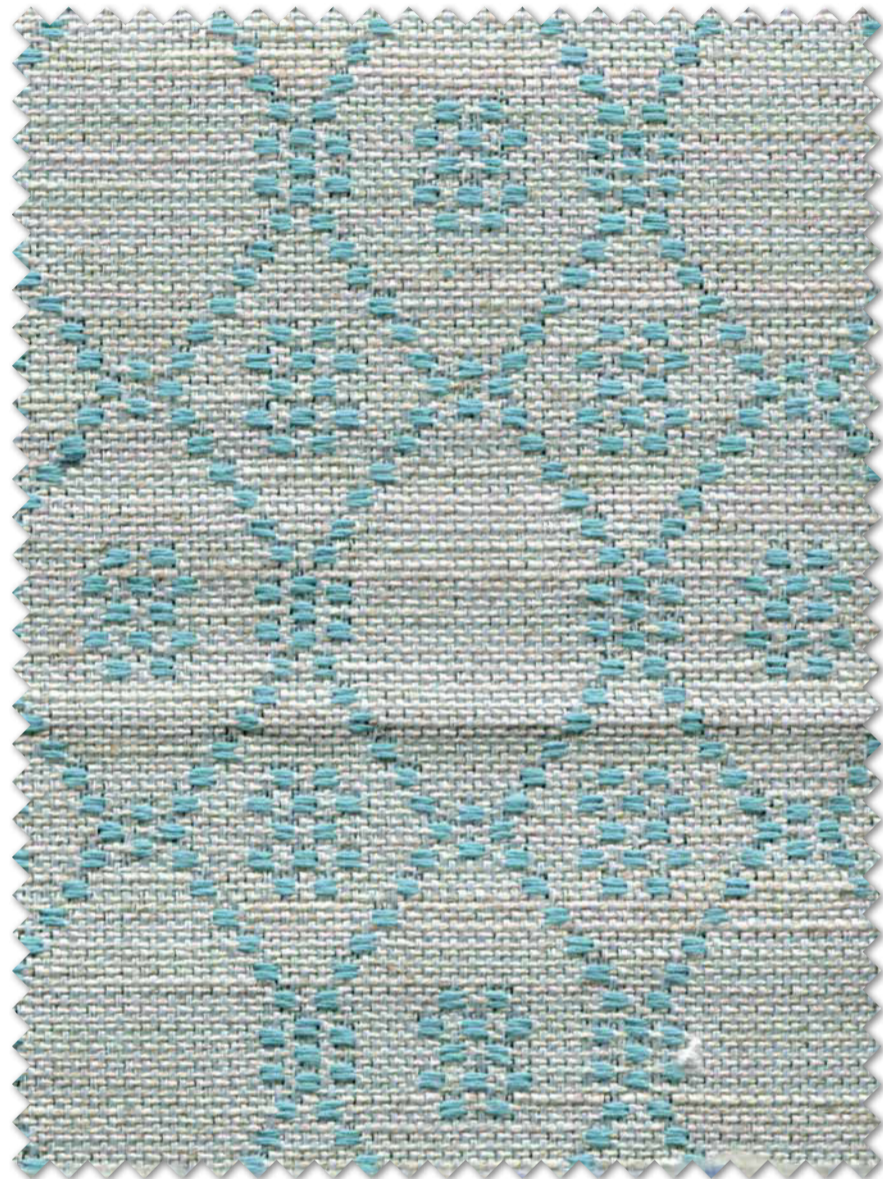
INDIANA 32



COMO 10



BARI 10



SAVONA 10



PISA 3



BRESCIA 10



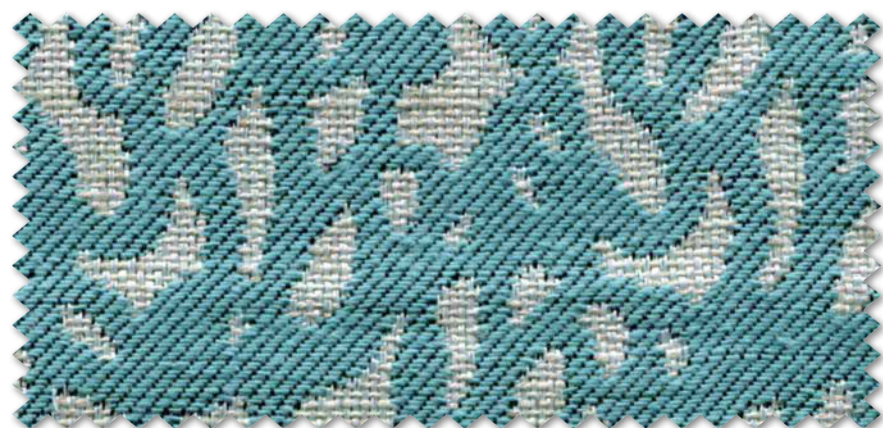
MONTINI 10



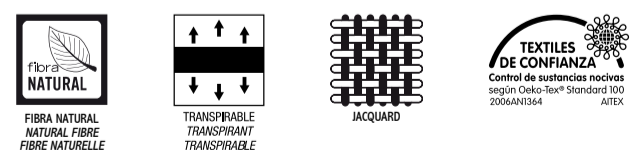
BRUNEI 6



NOVARA 10

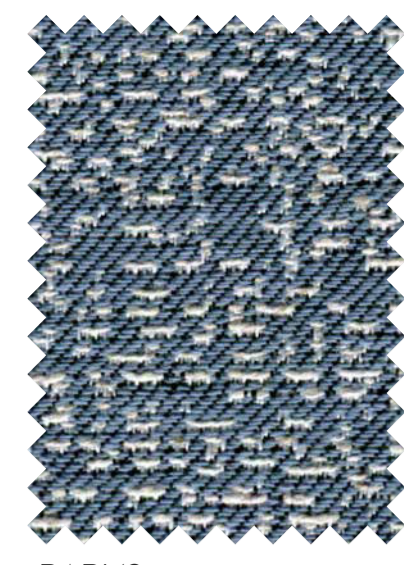


BADIA 10

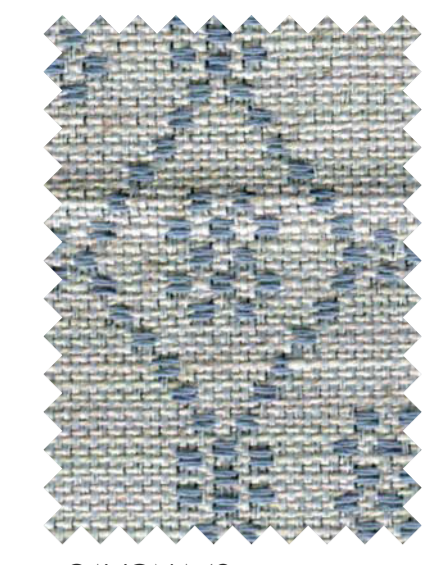


**FROCA**  
www.froca.com





BARI 12



SAVONA 12



PISA 1



BRUNEI 5



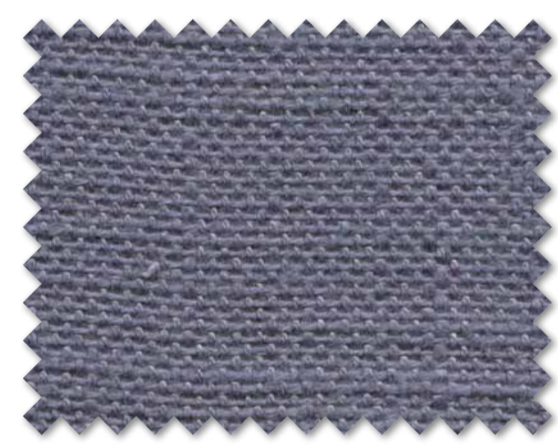
BRESCIA 12



NOVARA 12



COMO 12



INDIANA 22



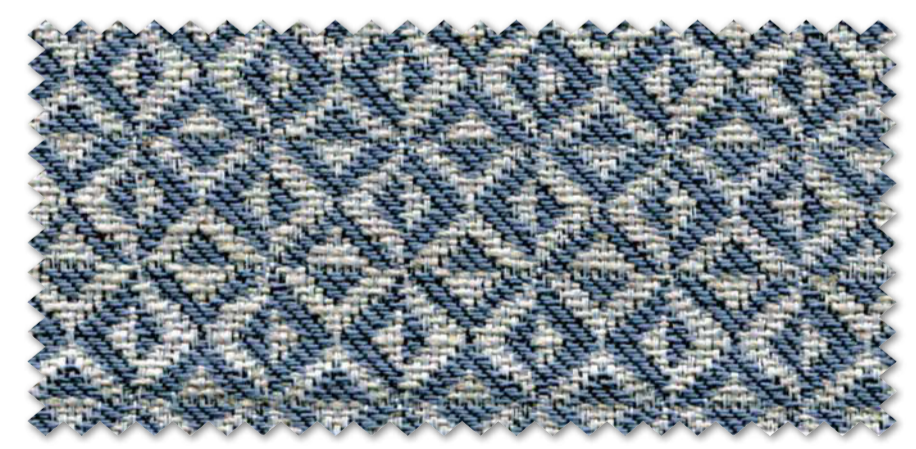
BADIA 12



BRUNEI 41



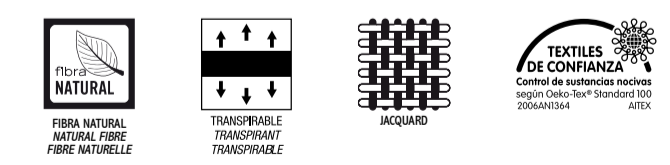
BRUNEI 35



MONTINI 12



BRUNEI 34



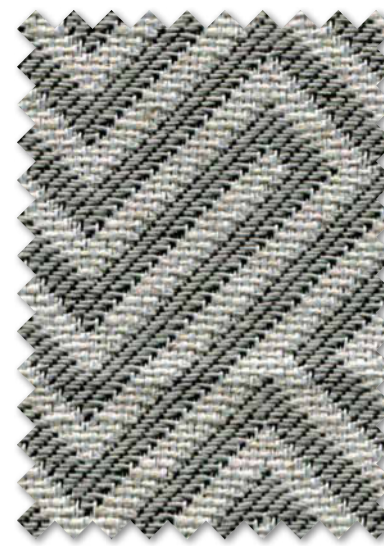
[www.froca.com](http://www.froca.com)



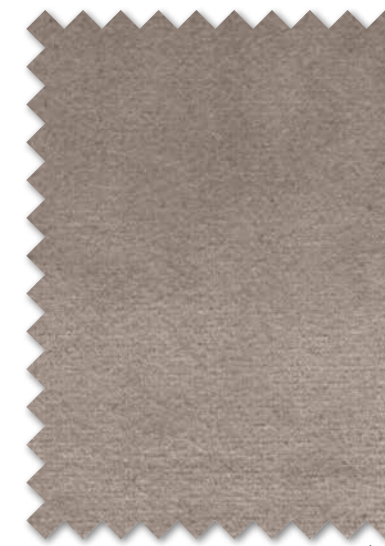




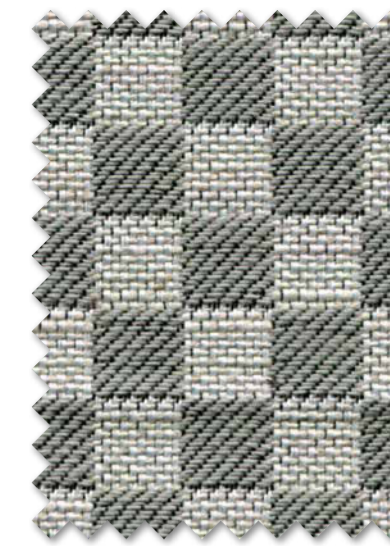
**FROCA**  
www.froca.com



NOVARA 13



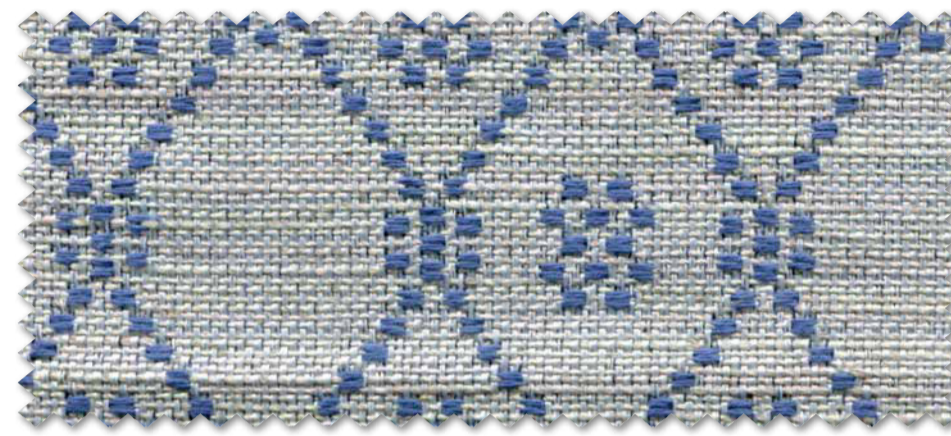
BRUNEI 3



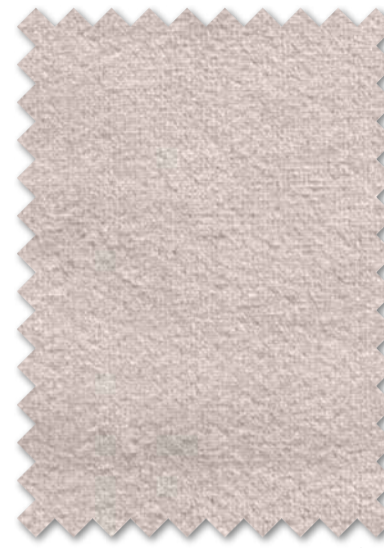
PIANORD 13



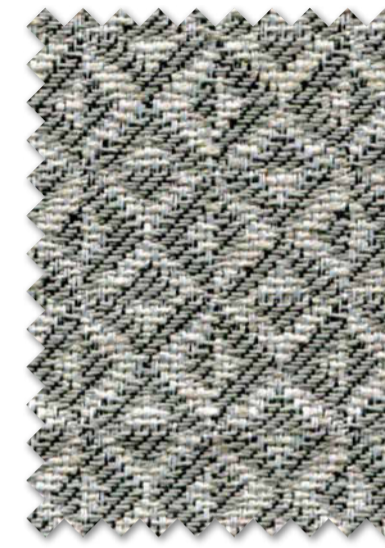
BARI 13



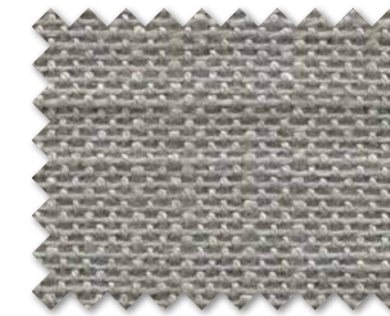
SAVONA 11



BRUNEI 5



MONTINI 13



INDIANA 33



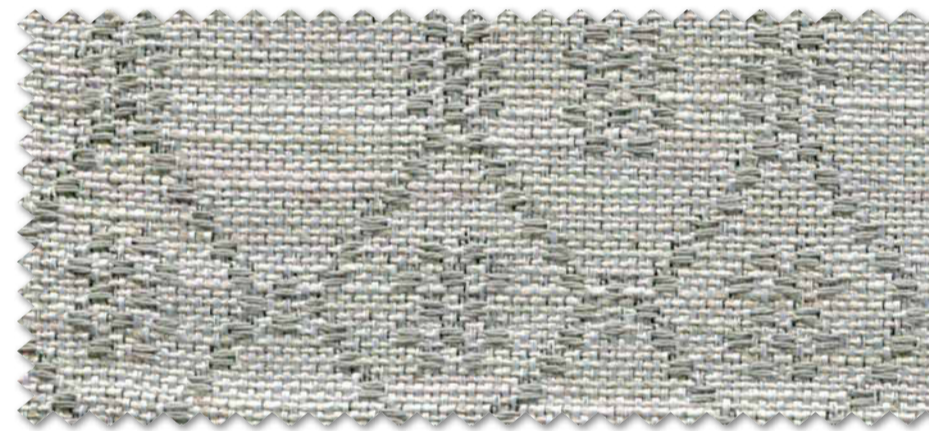
COMO 13



NOVARA 11



BADIA 11



SAVONA 13



PISA 5



BRUNEI 32



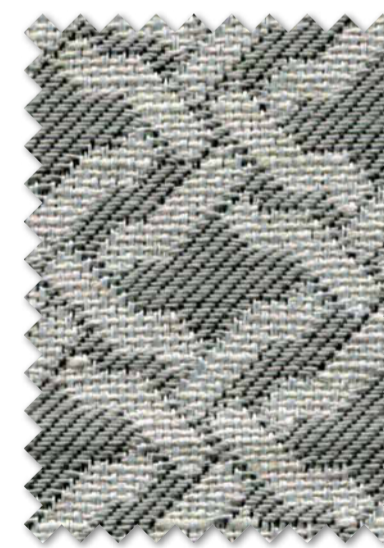
BRESCIA 11



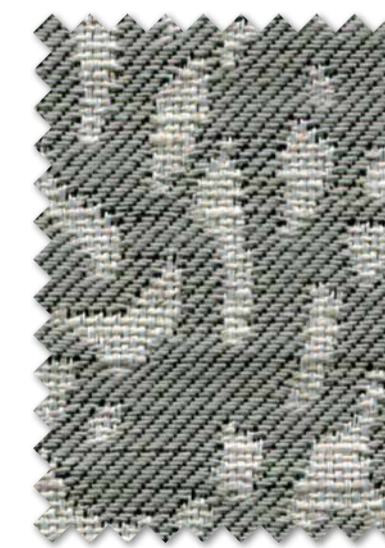
BRUNEI 35



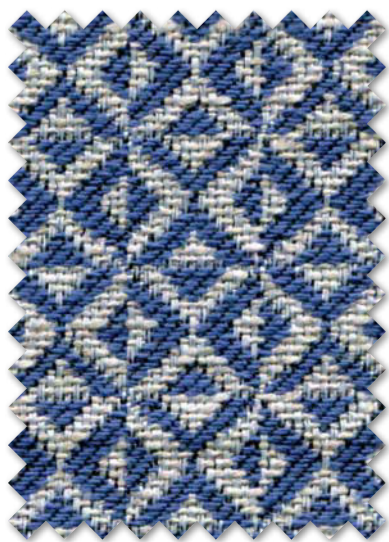
COMO 11



BRESCIA 13



BADIA 13



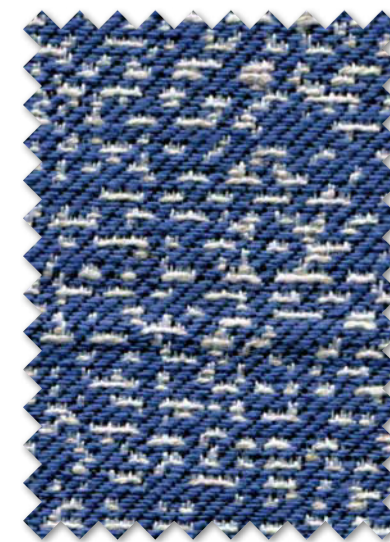
MONTINI 11



INDIANA 21



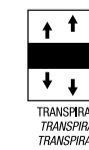
PIANORD 11



BARI 11



FIBRA NATURAL  
NATURAL FIBRE  
FIBRE NATURELLE



TRANSPIRABILE  
TRANSPIRANT  
TRANSPORABLE



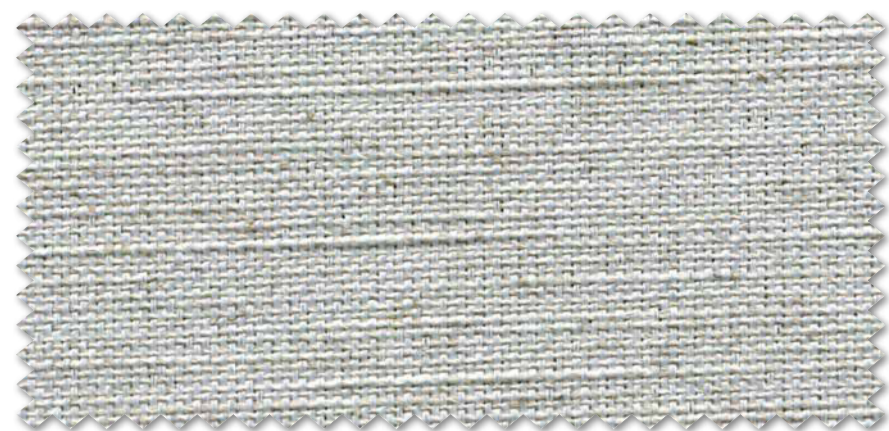
GIACQUARD



TEXTILES DE CONFIANZA  
Control de sustancias nocivas  
mod. 01/04/2014 (ant. 01/04/2010)  
ATEX

**FROCA**  
www.froca.com

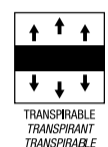




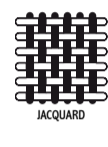
TRIESTE 1



FIBRA NATURAL  
NATURAL FIBRE  
FIBRE NATURELLE



TRANSPARIBILE  
TRANSPARENT  
TRANSPARENT



JACQUARD



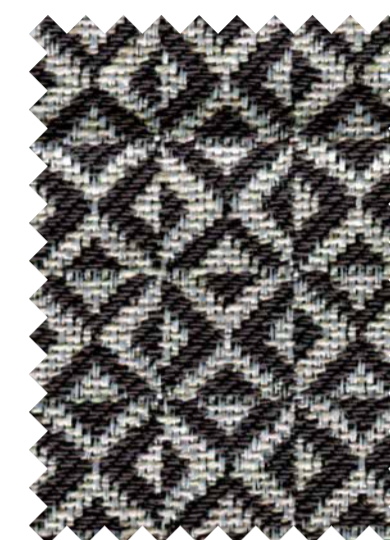
CENTRO DE CONFIANZA  
CENTRE OF CONFIDENCE  
soggetti Oeko-Tex® Standard 100  
2016/AM1004



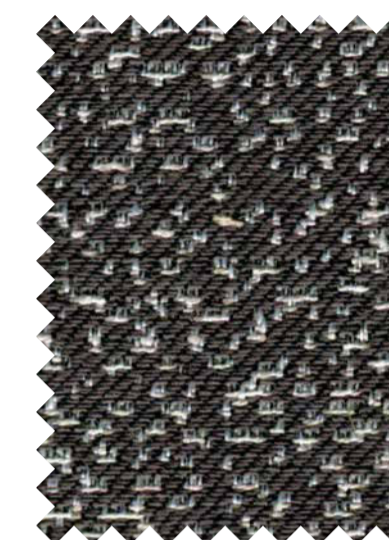
www.froca.com



PISA 1



MONTINI 14



BARI 14



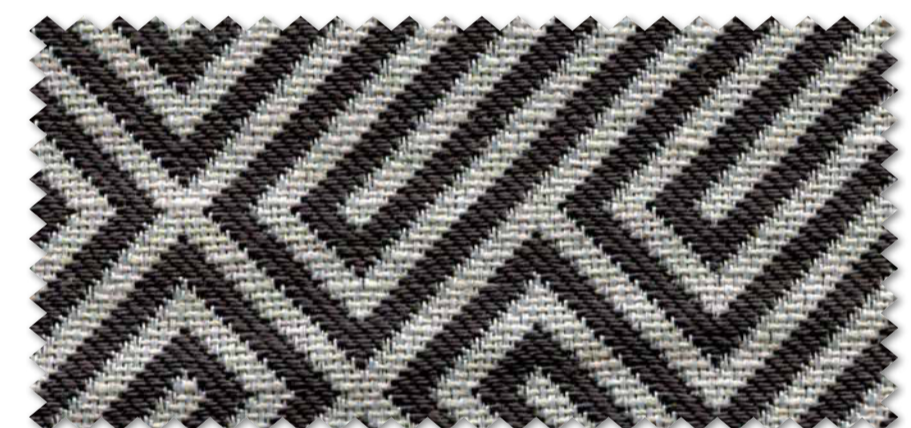
COMO 14



BRUNEI 41



INDIANA 2



NOVARA 14



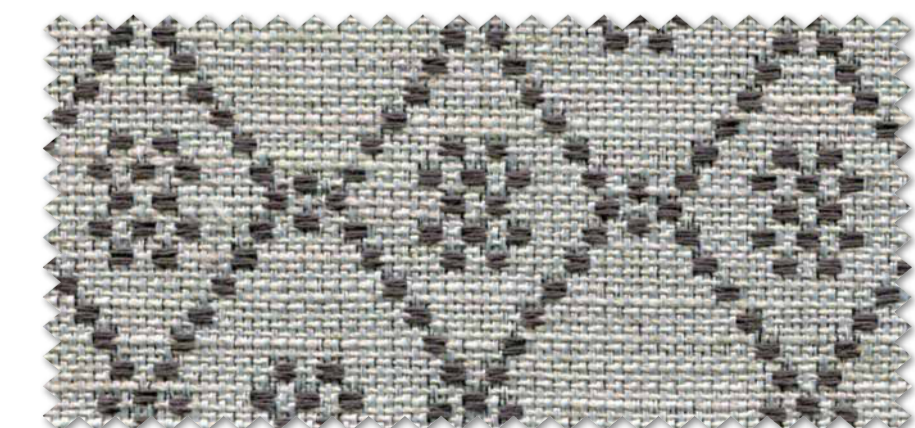
BRESCIA 14



PIANORD 14



BRUNEI 2



SAVONA 14



BADIA 14

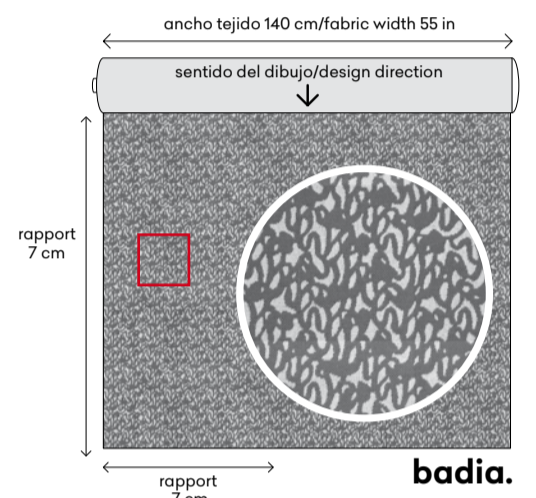
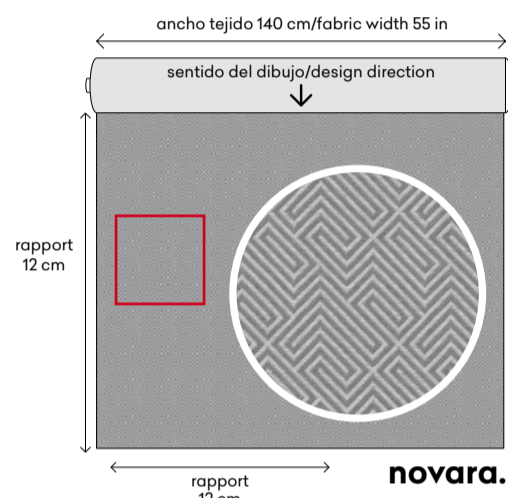
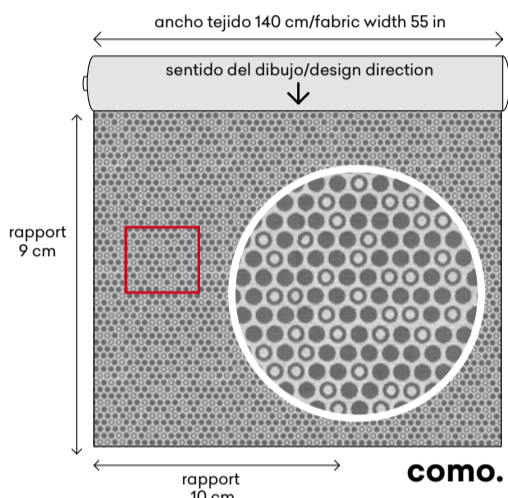
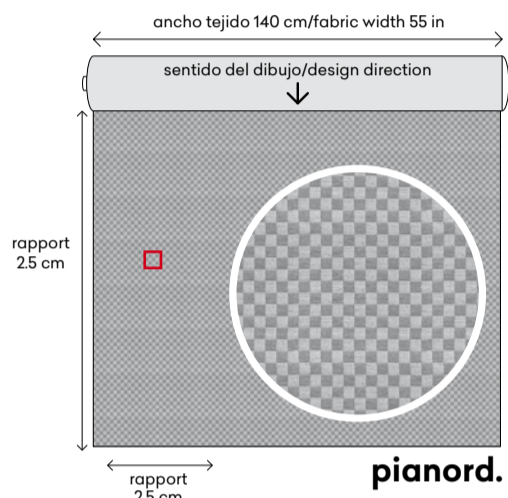
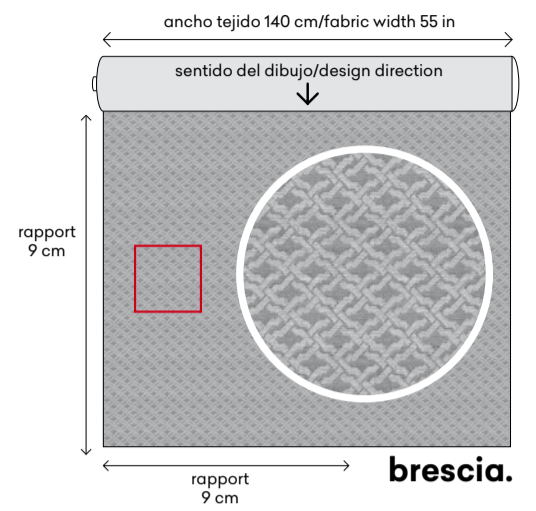
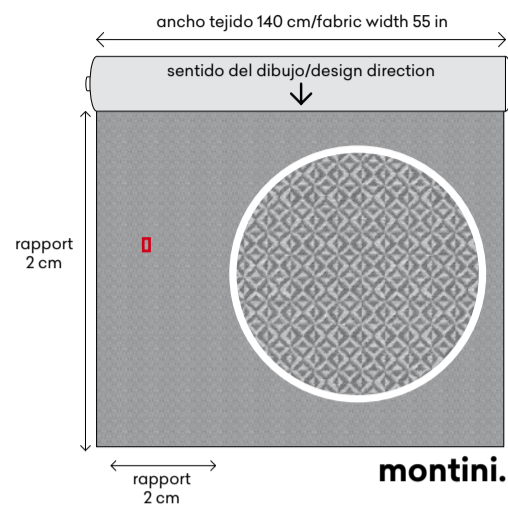
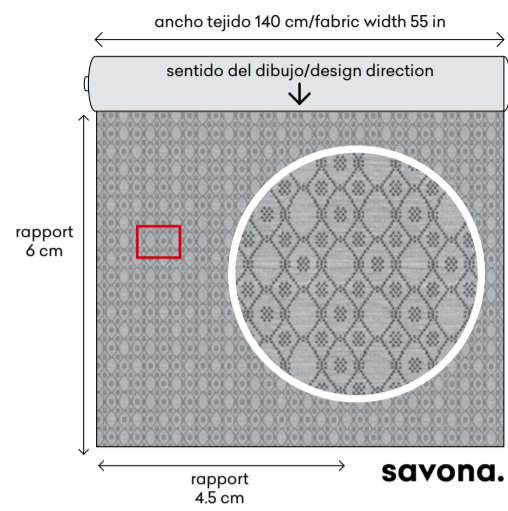
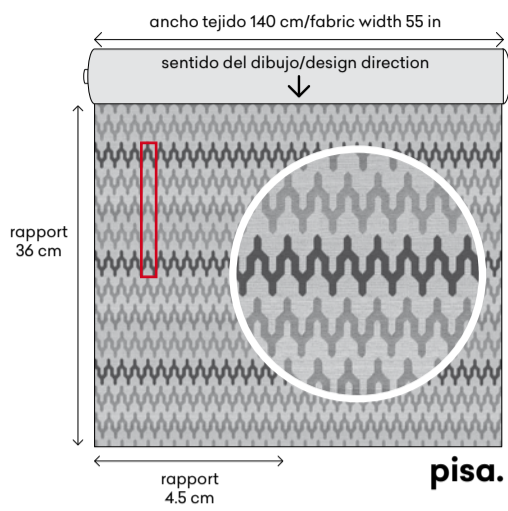
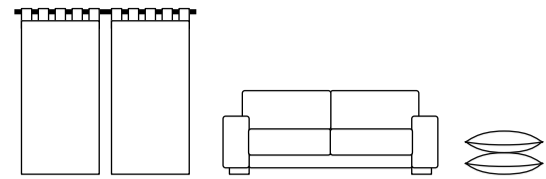


www.froca.com



# especificaciones técnicas.

## technical specifications · spécifications techniques



### pisa. savona. montini. brescia. bari. trieste. novara. badia. pianord. como

COMPOSICIÓN Composition / Composition	30% COT. 30% PES. 25% VIS. 15% LI.	
ANCHO Width / Largeur	140 cm · 54 in.	
PESO Weight / Poids	470 gr/m2 · 660 gr/ml	
RESISTENCIA DE LAS COSTURAS Seam strenght / Résistance des coutures	Urdimbre Warp Châine 3.2 mm Trama Weft Trame 2.8 mm	BS 3320:1988 BS 2543:1995
RESISTENCIA A LA ABRASIÓN Abrasion resistance / Résistance à l'abrasion	> 24.000 Ciclos Cycles Cycles	BS 5690 BS 2543:1995
SOLIDEZ DE LOS COLORES A LA LUZ Colour fastness to light / Résistance à la lumière	5	UNE 40187 BS 1006-B02
SOLIDEZ A LA LIMPIEZA EN SECO Rubbing solvents / Résistance au nettoyage à sec	4-5	ISO 105-D01 UNE 40099
SOLIDEZ DE LOS COLORES AL LAVADO Rubbing fastness in humid state / Résistance au nettoyage	4-5	ISO 105-C06 UNE 40029
RESISTENCIA AL PILLING Pilling resistance / Résistance au pilling	4	ISO/DIS 12945-2
INSTRUCCIONES DE LAVADO Washing instructions / instructions de lavage		

### brunei.

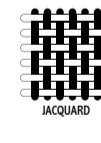
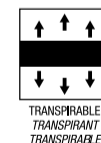


COMPOSICIÓN Composition / Composition	100% PES.	
ANCHO Width / Largeur	140 cm · 54 in.	
PESO Weight / Poids	290 gr/m2 · 406 gr/ml	
RESISTENCIA DE LAS COSTURAS Seam strenght / Résistance des coutures	Urdimbre Warp Châine 1.9 mm Trama Weft Trame 2.0 mm	EN ISO 13936-3:2007 EN ISO 13936-3:2007
RESISTENCIA DE ROTURA AL RASGADO Tear strenght / Résistance à la déchirure	Urdimbre Warp Châine 110N Trama Weft Trame 130N	EN ISO 13937-3:2001 EN ISO 13937-3:2001
RESISTENCIA A LA ABRASIÓN Abrasion resistance / Résistance à l'abrasion	> 30.000 Ciclos Cycles Cycles	EN ISO 12947-2 1998
SOLIDEZ DE LOS COLORES A LA LUZ Colour fastness to light / Résistance à la lumière	5	EN ISO 105 B02:1994
SOLIDEZ A LA LIMPIEZA EN SECO Rubbing solvents / Résistance au nettoyage à sec	4-5	EN ISO 105X12:2001
SOLIDEZ DE LOS COLORES AL LAVADO Rubbing fastness in humid state / Résistance au nettoyage	4-5	ISO105X12:2001
RESISTENCIA AL PILLING Pilling resistance / Résistance au pilling	4-5	ISO12945-2
INSTRUCCIONES DE LAVADO Washing instructions / instructions de lavage		

Puede lavarse a máquina, con programa delicado a 30°C  
Washing machine and tumble dryer can be used. With soft program at 30°C.  
Lave-linge et sèche-linge peuvent être utilisés. Avec programme doux a 30°C.

### indiana.

COMPOSICIÓN Composition / Composition	70% VIS. 30% LI.	
ANCHO Width / Largeur	140 cm · 54 in.	
PESO Weight / Poids	450 gr/m2 · 630 gr/ml	
RESISTENCIA DE LAS COSTURAS Seam strenght / Résistance des coutures	Urdimbre Warp Châine 3.5 mm Trama Weft Trame 3.8 mm	BS 3320:1988 BS 2543:1995
RESISTENCIA A LA ABRASIÓN Abrasion resistance / Résistance à l'abrasion	> 20.000 Ciclos Cycles Cycles	BS 5690 BS 2543:1995
SOLIDEZ DE LOS COLORES A LA LUZ Colour fastness to light / Résistance à la lumière	5	UNE 40187 BS 1006-B02
SOLIDEZ A LA LIMPIEZA EN SECO Rubbing solvents / Résistance au nettoyage à sec	5	ISO 105-D01 UNE 40099
SOLIDEZ DE LOS COLORES AL LAVADO Rubbing fastness in humid state / Résistance au nettoyage	5	ISO 105-C06 UNE 40029
RESISTENCIA AL PILLING Pilling resistance / Résistance au pilling	4-5	ISO/DIS 12945-2
INSTRUCCIONES DE LAVADO Washing instructions / instructions de lavage		



www.froca.com

## cuidado de los tejidos. instrucciones de lavado / washing instructions / instructions de lavage



Lavado a máquina, máximo a 30° C con detergentes neutros.  
Hand wash, maximum 30° C with neutral detergents.  
Lavage à la main, un maximum de 30 ° C avec un détergent neutre.



No arrugar, retorcer ni centrifugar.  
Do not squeeze, wrink or spin-dry.  
Ne pas presser ou essorer.



No usar lejía.  
Do not use bleach.  
Ne pas utiliser eau de javel.



No secar en secadora.  
Do not tumble dry.  
Ne pas sécher en machine.



Evitar secar al sol.  
Avoid drying in the sun.  
Éviter sécher au soleil.



Planchar por la cara posterior, máxima 110°.  
Iron only on the rear side, at a maximum of 110°.  
Repasser par la face de derrière, 110° au maximum.



Puede utilizarse el lavado en seco.  
Dry cleaning can also be used.  
Nettoyage à sec peut être utilisé.



Lavar a mano.  
Hand wash.  
Laver à la main



f **FROCA**

[www.froca.com](http://www.froca.com)







PERFECT  
FABRICS.

**FROCA**

[www.froca.com](http://www.froca.com)